
	<h2>Local parking amendment</h2>	
Reference	1617Q1003	Location overview
Location	Snowsfields junction with Bermondsey St / St Thomas St / Crucifix Lane	
Proposal	To install new contraflow cycle infrastructure at Snowsfields, and remove existing parking bays	
Community council meeting	Bermondsey and Rotherhithe	
Community council date	22 June 2016	
Ward(s) affected	Grange	

Local parking amendment

A local parking amendment (LPA) is small project to change an existing parking restriction or to introduce a new one.

These tend to be carried out in locations where we have had a request to look at dangerous or obstructive parking and where small lengths of restrictions could provide a solution.

Request

In 2014 Simon Phillips of the London Borough of Southwark requested that Transport For London assist with the implementation of contraflow cycling eastbound along Snowsfields, by designing and installing the appropriate signals infrastructure at the above junction, which lies within the Transport for London Road Network (TLRN). TfL consented on the basis that this would provide a safe route bypassing the busy junction of London Bridge / Duke Street Hill. The opportunity arose due to planned works to resignal the entire junction as part of Network Rail's London Bridge redevelopment programme.

TfL commissioned Arcadis design consultants to redesign the junction in question, drafting new signal arrangements and phasing to accommodate cycle movement from Snowsfields into Bermondsey Street / St Thomas St. The proposed design requires the removal of several parking bays at the east end of Snowsfields (see drawing attached). Network Rail will be installing the required signal ducting in May 2016 as an addition to their existing London Bridge refurbishment programme; the additional cycle traffic signal at Snowsfields will subsequently be installed by TfL and 'bagged off' until such time as Southwark can implement the appropriate Traffic Management Order for the contraflow cycle lane.

Location

Snowsfields falls within the London Bridge (F) Controlled Parking Zone (CPZ). The zone is operational Monday – Saturday, 8.00am – 6.30pm and applies to a network of streets within the zone.

Snowsfields is located in the north of the borough. Whilst the street is largely non-residential, it is noted that there are many commercial properties, such as shops and restaurants within short walking distance. This makes the street an attractive parking location for non-residents outside of zone hours.

Investigation and conclusions

Transport for London (TfL) engineers carried out site visits, the on-street parking is largely prioritised for zone (F) permit holders. There are sections of single yellow lines in the street, whilst these are controlled and enforced during the CPZ times, outside the day/hours, the restriction does not apply and any motorist is entitled to park on the yellow line.

To accommodate the contra-flow cycle lane and the changes to the Snowsfields junction with Bermondsey St / St Thomas St / Crucifix Lane it is proposed that two permit holders (F) parking places are removed and double yellow lines installed to provide enough space for the contra-flow cycle lane to operate safely. This will require the removal of six parking spaces.

Tooley Street, to the north, is currently operating westbound-only in summer 2016 for two years with a narrow

contraflow cycle lane. As a result of these changes there is likely to be increased pressure on the network in the vicinity. TfL's Forward Planning directorate have recommended that this scheme proceed in order to relieve modal conflict on Tooley Street.

Recommendation

Based on our investigation and conclusions, the council are recommending the removal of two permit holders (F) parking places (6 spaces) and the introduction of double yellow lines on the approach to the Snowfield's junction with Bermondsey St / St Thomas St / Crucifix Lane.

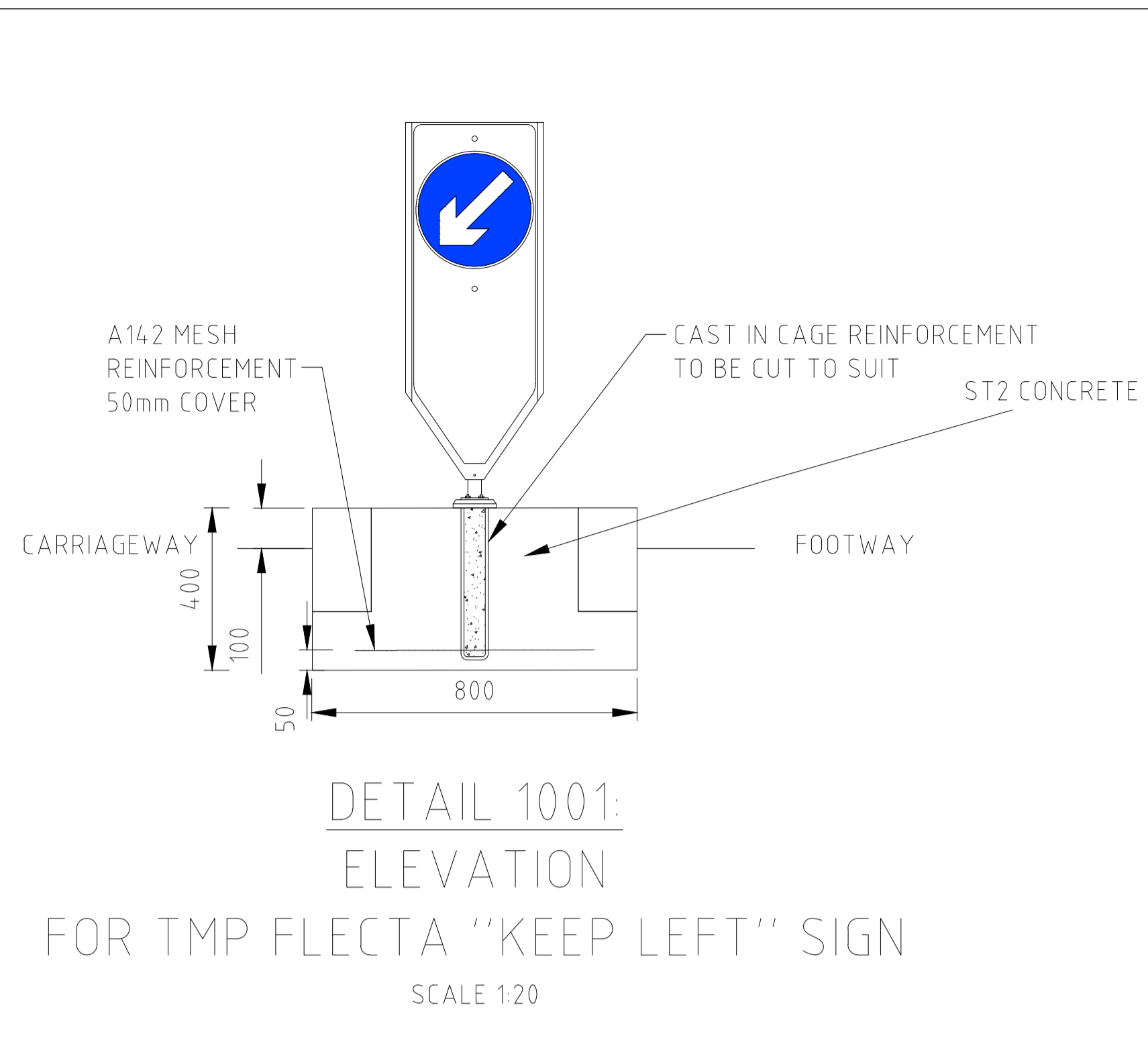
A detailed design drawing of the proposal is provided within this document.

Next steps

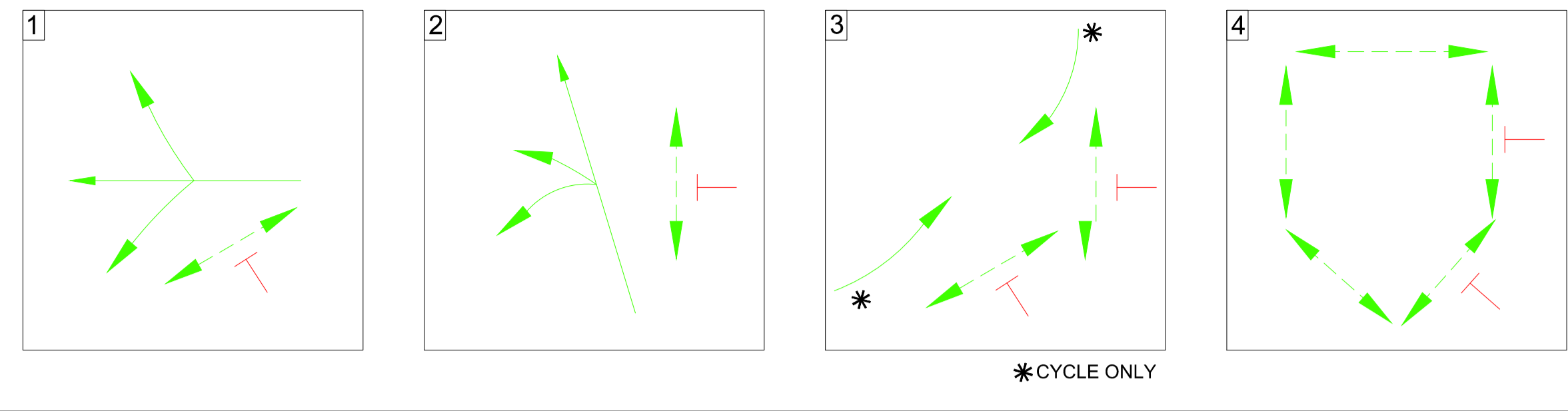
Should the community council approve this local parking amendment it is expected that statutory consultation will commence in August 2016.

Following the statutory consultation period, the council will make arrangements to install the restrictions (road marking and signage at the location).

Should objections be received during the statutory consultation period, these will be presented at the next community council meeting for determination.



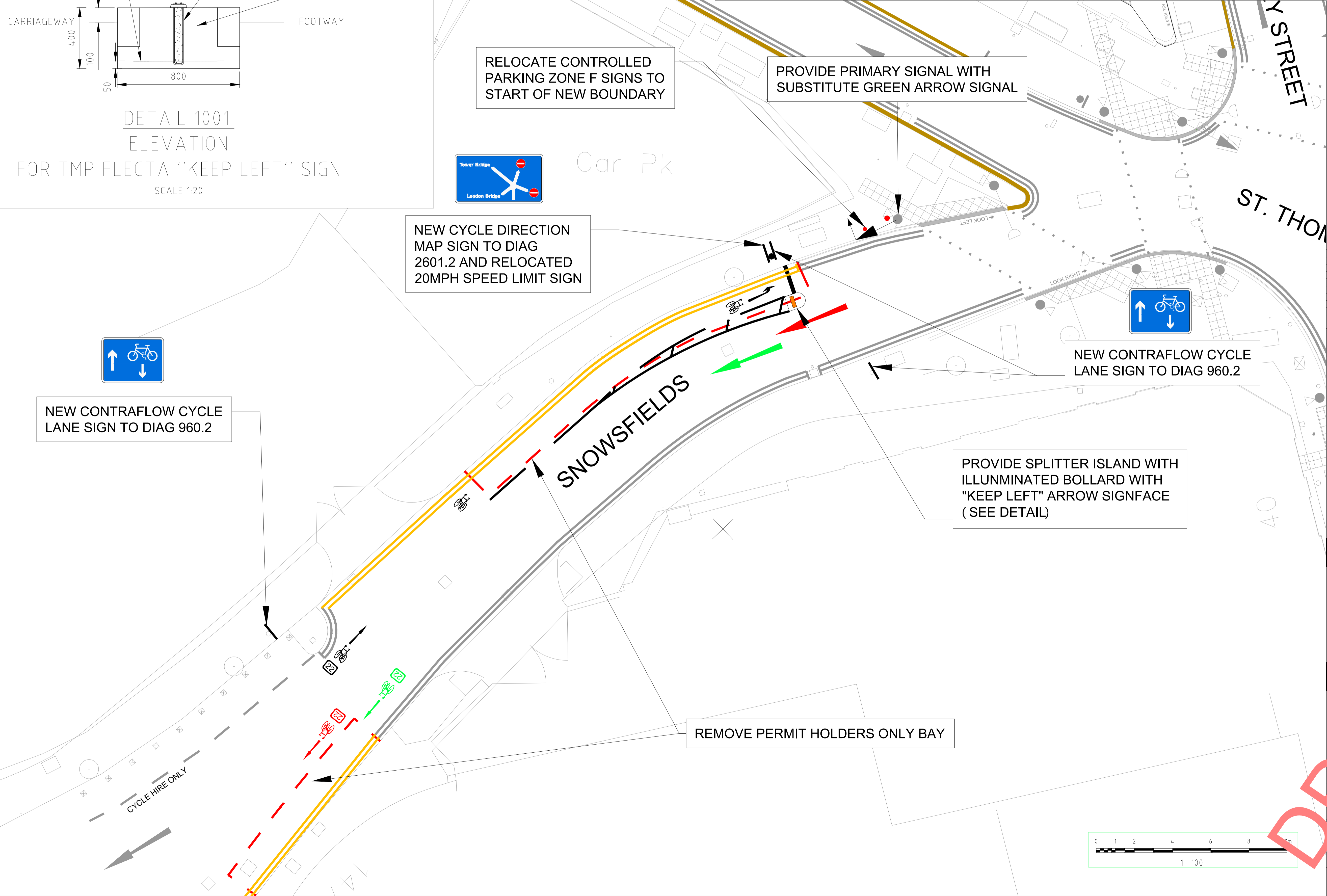
PROPOSED METHOD OF CONTROL



LEGEND:

PROPOSED ROAD MARKINGS	
RELOCATED ROAD MARKINGS	
REMOVED ROAD MARKINGS	

NOTE:
1. PROPOSED SPLITTER ISLAND WOULD BE DEMOUNTABLE



Rev	Date	Description	Drawn	Check	Approv
2	22.03.16	AMENDED PARKING CONTROLS	DJ	ST	GH
1	05.02.16	INITIAL	AFG	ST	GH

ARCADIS Design & Consultancy
Infrastructure and Built Assets

Registered office: Manning House, 22 Carlisle Place, London SW1P 1JA
Coordinating office: Unit 17 Innovation Centre, Bridge of Don, Aberdeen AB23 8GX
Tel: 44 (0) 1224 822494

www.arcadis.com

TITLE:
SNOWFIELDS CONTRA-FLOW CYCLE LANE

Designed	S.THIRLWELL	Signed	Date
Drawn	D.JORDAN	Signed	22.03.16
Checked	S.THIRLWELL	Signed	-
Approved	G.HILLING	Signed	-
Scale:	1:100 @ A1	Datum:	AOD
Original Size:	A1	Grid:	OS
Suitability Code:	Sx	Project Number:	UA008595

Suitability Description:
SNOWFIELDS CONTRA-FLOW

Drawing Number:	UA008595-LND-01	Revision:	02
-----------------	-----------------	-----------	----

